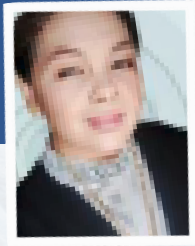


PROFILE ENHANCEMENT ON SUSTAINABILITY EXPERIENCES OR / AND INVOLVEMENT IN SUSTAINABLE PROJECTS.



SARINAH BINTI HAMZAH

+6017 2555 743

hamzahsue28@gmail.com

EXPERIENCE

Less than 3 years experience

- Factory / Manufacturing
- IT / Telecommunication / Multimedia
- Education, Universities, Polytechnics or Colleges

Less than 3 -5 years experience

Less than 6-10 years experience

- Marine & Shipping
- Constructions
- Transportation / Delivery Services
- Logistics & Warehousing

More than 10 years experience

- Oil and Gas / Petrochemical / Refinery
- Professional Services

SUSTAINABILITY TALENT

Sarinah talent is more in the Oil, Gas and Engineering and Professional Services. She has extremely good knowledge in managing social, environmental and economic elements for many industries in Malaysia. Sarinah is also involves in managing waste and energy management relating to planet issues. She understand sustainable consumption & production, plus social elements for sustainability to take shape. She can speak about sustainability impact and support basic services. Sarinah can help improve performance and efficiency of company's processes contributing towards productivity and sustainability management plan.

SOCIAL ELEMENTS

- Selecting a Project Leader
- Design company's Work Process for ISO Standards
- Involved in company's ISO Write Up Documentation
- Involved in company's ISO Certification with 3rd Party Service Provider
- Involved in hiring / dismissal of Employees / Staff together with HR Manager
- Involved in hiring / dismissal of Employees / Staff together with HR Manager
- Involved in hiring People of Special Needs or Indigenous Groups
- Involved in designing fair practices for internal staff in conducting business operations
- Involved in purchasing or bringing local procurement activities on behalf of companies
- Involved in communicating with Clients and Customers for Company's products and services
- Involved in speaking to company's stakeholders on behalf of company Board of Directors
- Involved in looking at human rights issues in the Company
- Involved in setting up company's Work from Home Procedures or Hybrid Working Environment
- Has been appointed as Project Leader for Social welfare in Company
- Involved in setting up Social activities in Company such as Family Day, Sports Day
- Involved in setting up organisational learning for staff development program
- Involved in setting up staff diversity and equal opportunity in Company
- Involved in setting up staff training and development schedule plan in Company
- Involved in setting up customer's Health & Safety standards
- Involved in setting up customer's privacy or data protection

ENVIRONMENTAL ELEMENTS

- Involved in advising staff or employees on local transportation
- Involved in advising staff or employees on digitalisation
- Involved in planning for the use of local procurement or service provider
- Involved in implementing local transportation policy to reduce expenses
- Involved in savings electricity and expenses
- Involved in saving water consumption in company
- Involved in setting waste management committee in company
- Involved in advising and monitoring Recycling activities and practices in company
- Involved in advising and monitoring waste disposal (Hazardous Products) in company
- Involved in setting zero waste management program or recycling campaign

ECONOMY ELEMENTS

- Involved in calculating Benefits Cost Ratio for company Return on Investment
- Involved in calculating Net Present Value for company's Return in Investment
- Involved in looking at company's flexibility in managing projects.
- Involved in looking at company's expansion plan from present projects
- Involved in looking at local economic impacts arises from present or past projects
- Involved in looking at company's profitability or indirect benefits from present or past projects
- Involved in setting up financial models or forecast
- Involved in setting up new subsidiaries or Joint Ventures
- Involved in setting up bonuses and incentives programs

CORPORATE SOCIAL PRACTICES & COMMUNITY ENGAGEMENT



1. Participate in Environmental Impact Program for Humanity (Floods, Fire Disaster, Hurricanes, River Cleaning, Beach Cleaning)
2. Participate in Community Engagement Program for Human Development (Recycling, Waste Management, Circular Economy)
3. Participate in Economic Impact Program for Prosperity (Waqaf, Charity, Donation)
4. Participate in Health & Wellness Program for Community (Blood Donation, Health Screening, Aerobics, Yoga)
5. Participate as Leader or Committee Member or Sub-Committee Member in Association or Clubs.

